

The background of the slide is a solid orange color. On the left side, there is a photograph of a staircase. The staircase has light-colored, possibly stone or concrete, steps. A metal handrail runs along the side of the stairs. The wall behind the stairs is a light cream or off-white color. The overall composition is simple and modern.

The importance and possibilities of teenagers engaging with local communities

3-B Umetsu Kayo Joen Hyebin Honjo Saki

Motivation 1

A faint, light gray world map is visible in the background of the slide, centered behind the text.

Our interest in social problems

Motivation 1

Child isolation



Social isolation

Motivation 1



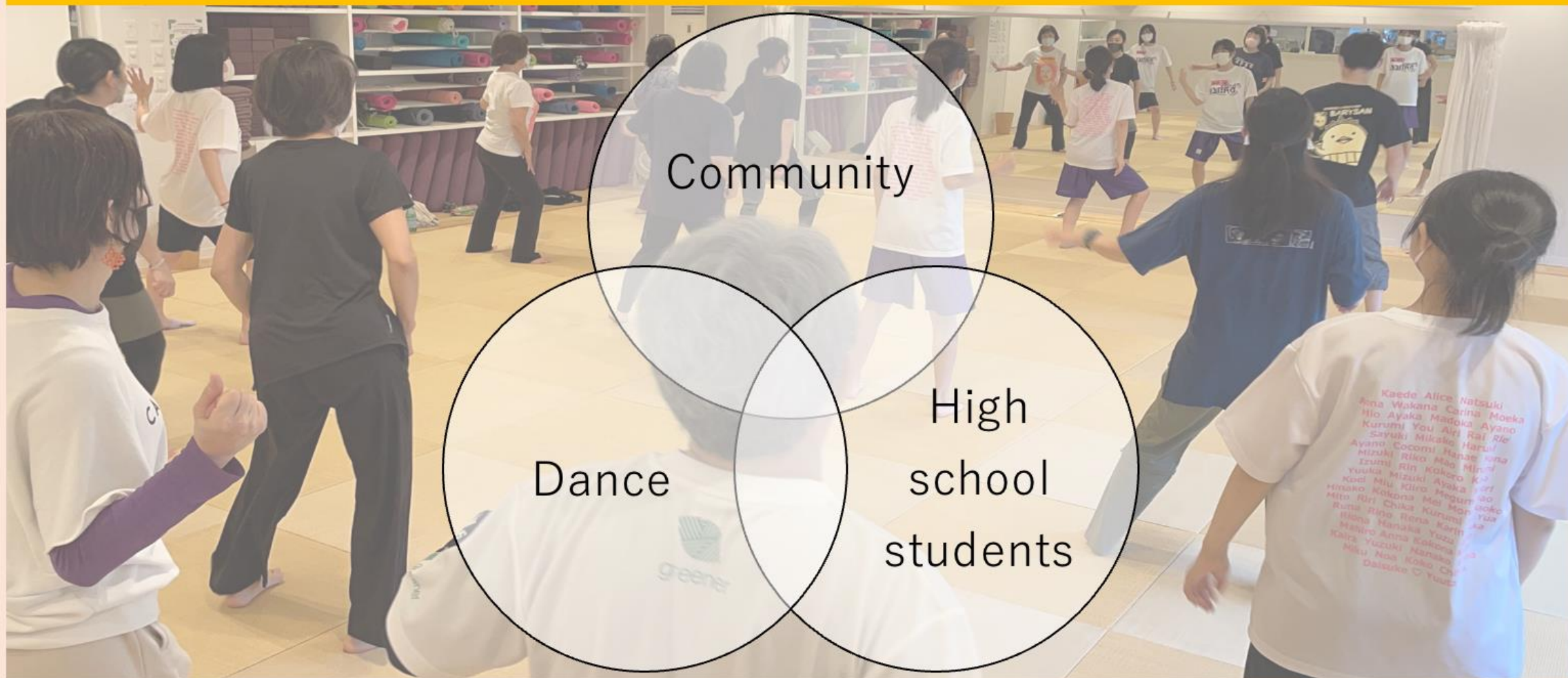
**We want
to solve
isolation
problem !**

Motivation 2

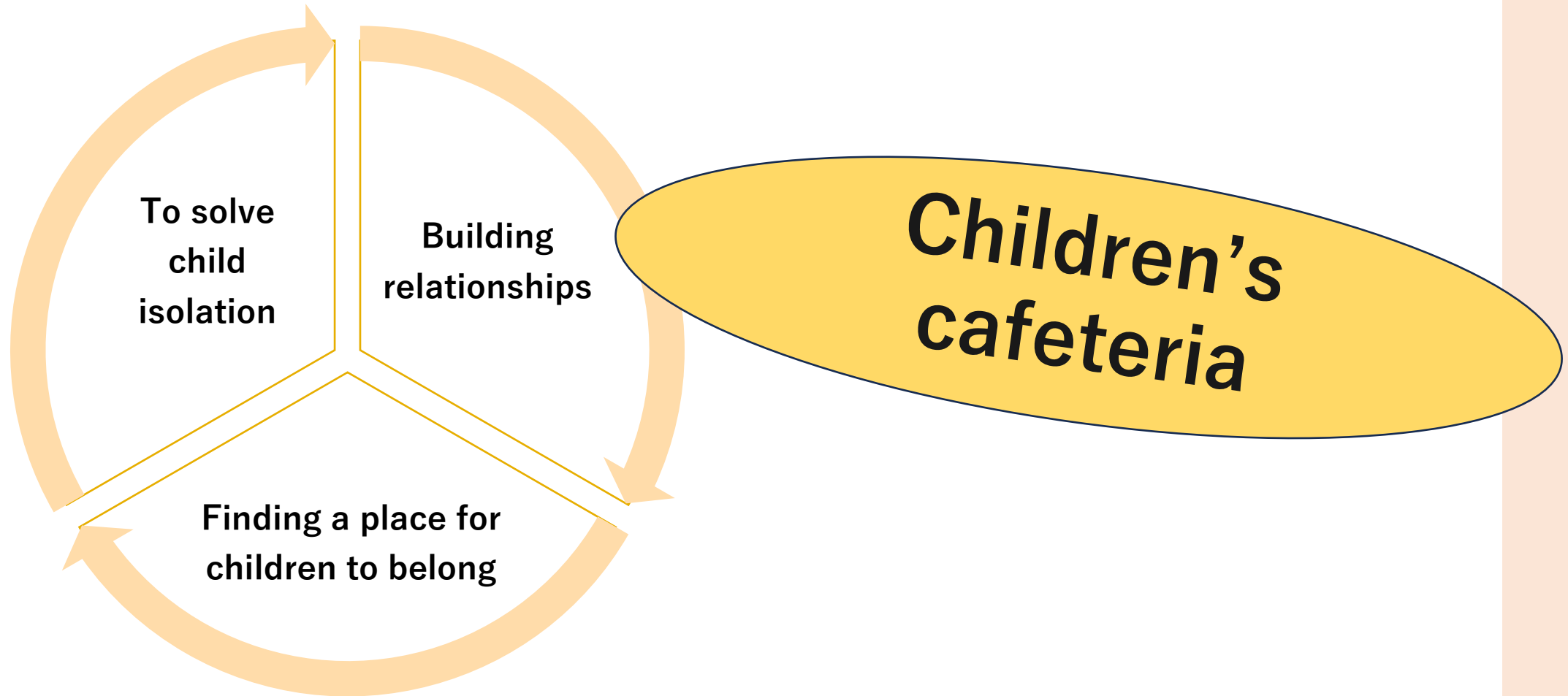
A faint, light gray world map is visible in the background of the slide, centered behind the text.

**Relationships within the local
communities**

Motivation 2



Motivation 2

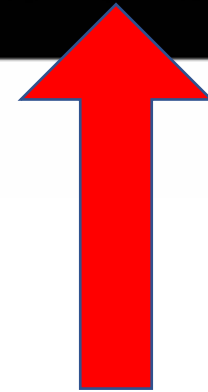


Higashi Sugano Tsunagu Shokudo

We searched the internet...

**Children's cafeteria
in Ichikawa city**

検索



Higashi Sugano Tsunagu Shokudo

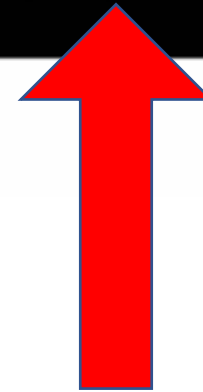
We searched the internet...

Children's cafeteria
in Ichikawa city

検索

Higashi Sugano Tsunagu
Shokudo

・
・



Higashi Sugano Tsunagu Shokudo



Providing low-price and nutritional meals

Not only children but also the community can use this center too

Expanding the circle of community interaction

Higashi Sugano Tsunagu Shokudo



**We want to
participate in
the Food Bank
Activity !**

Sure !

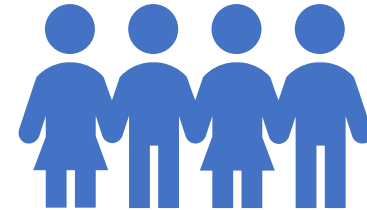


Activity explanation

What is a food bank?

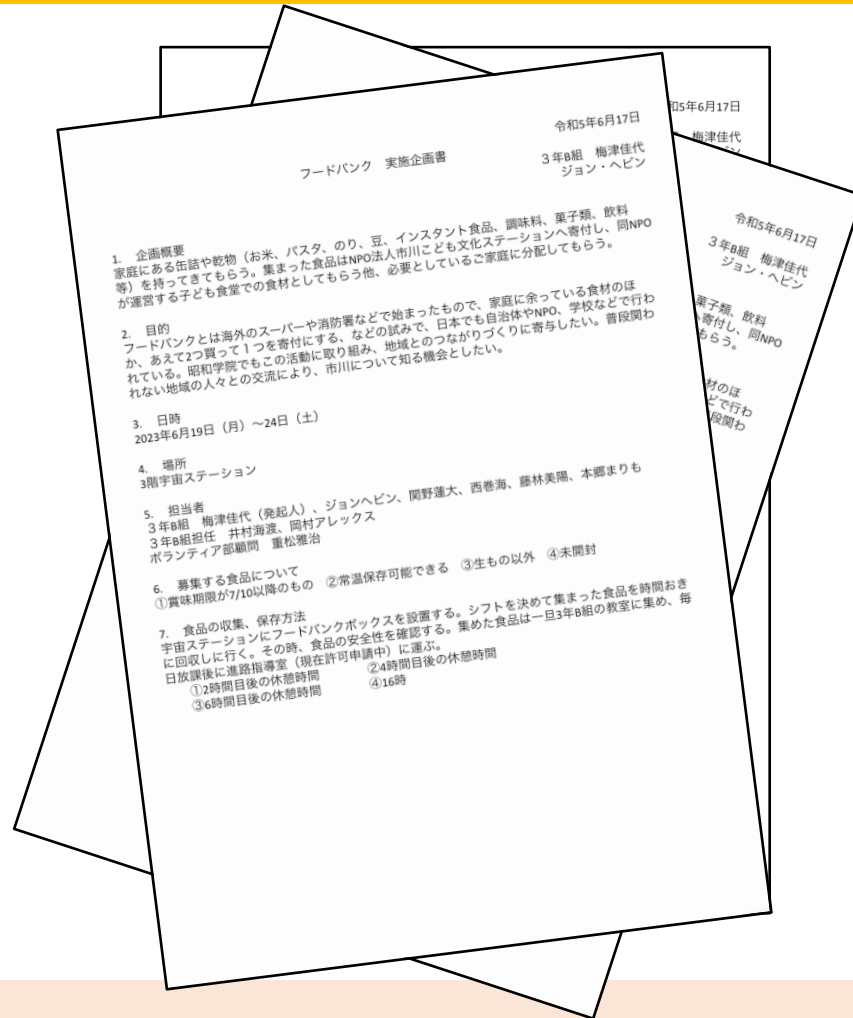


Leftovers



To those in need

Making a poster and proposal



We made donation boxes



Results

In 5 days...

96.2kg



Results

Graph of the results
(Family Mart)

Date of experiment	Amounts	Weight
October,2022	428	70.1kg
November,2022	140	41.7kg
December,2022	912	138.6kg
January,2023	448	53.8kg
February,2023	659	96.2kg
March,2023	598	89.9kg
April,2023	557	102.9kg
May,2023	872	131.4kg
June,2023	712	114.3kg
July,2023	127	21.8kg

If we compare

Family Mart

During 5days : 14kg

Showa gakuin

During : 96kg

About
6 times!!

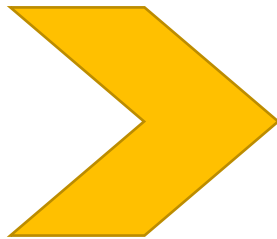
Results

Thank you !



Our appreciation

**Student
voices**



**I feel like I've
helped someone**

I'm glad I did it

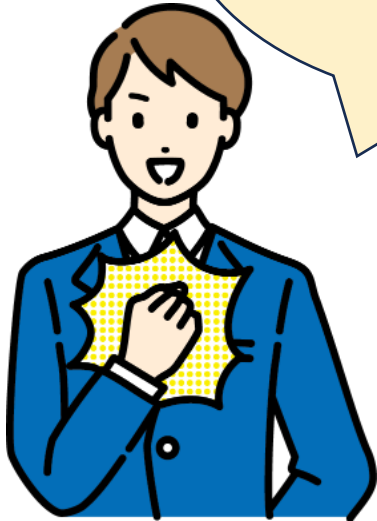
Thoughts

**I cannot do it
alone...**

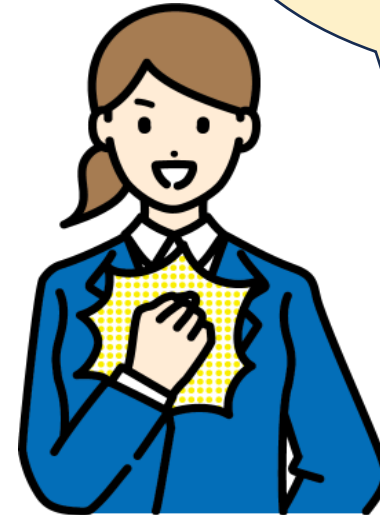


Thoughts

**I want to
help!**



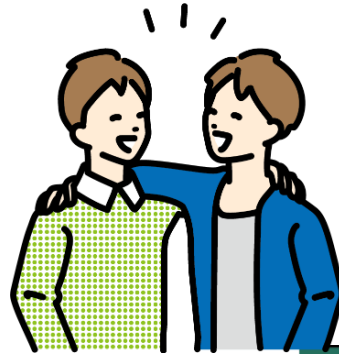
**What can I
do?**



Thoughts



I want to support children!



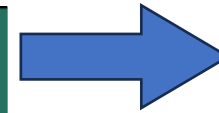
Classmates



Parents



Teachers



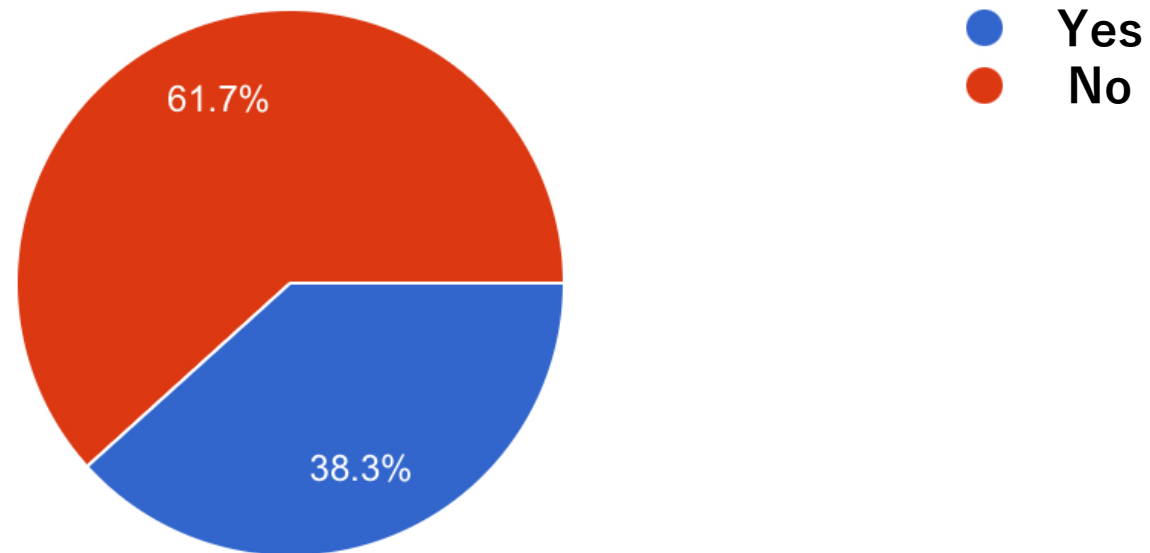
Children's cafeteria



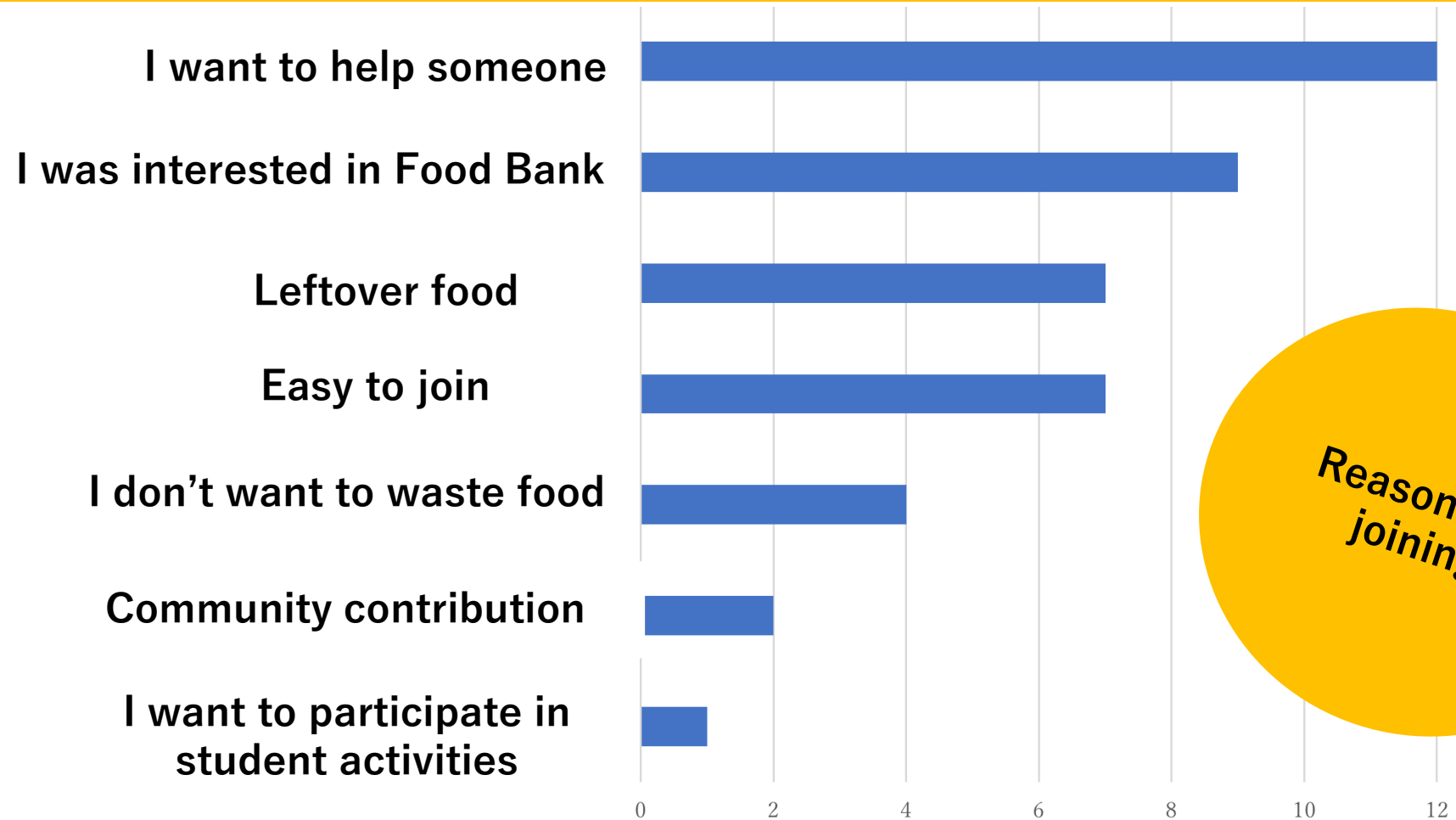
Questionnaire

Did you donate the Food Bank activity during June 19th ~24th ?

94 participants



Questionnaire



*Reasons for
joining*

Questionnaire

I was interested in it, but I couldn't do it alone.

Questionnaire

I was interested in it, but I couldn't do it alone.

Possible Food Bank Activities you can join



I could encourage someone!

Importance of School Activities

SCHOOL

```
graph TD; SCHOOL[SCHOOL] --> Effective[Effective Advertisement]; SCHOOL --> Collect[Collect Donations at School]; Effective --> Recognizable[Easily recognizable]; Collect --> Join[Easy to Join];
```

Effective Advertisement

Easily recognizable

Collect Donations at School

Easy to Join

Issues



Donation and support



Communities

Activities we can do now

Let's start at Showa

